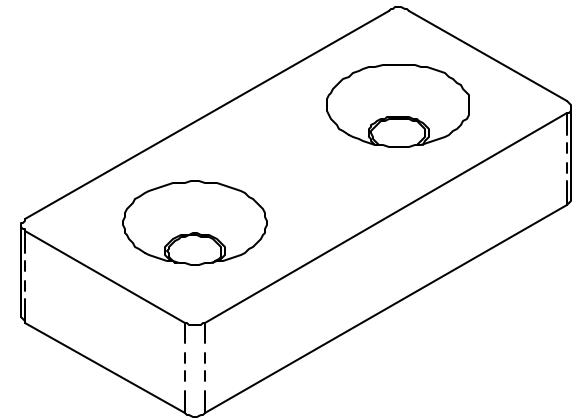
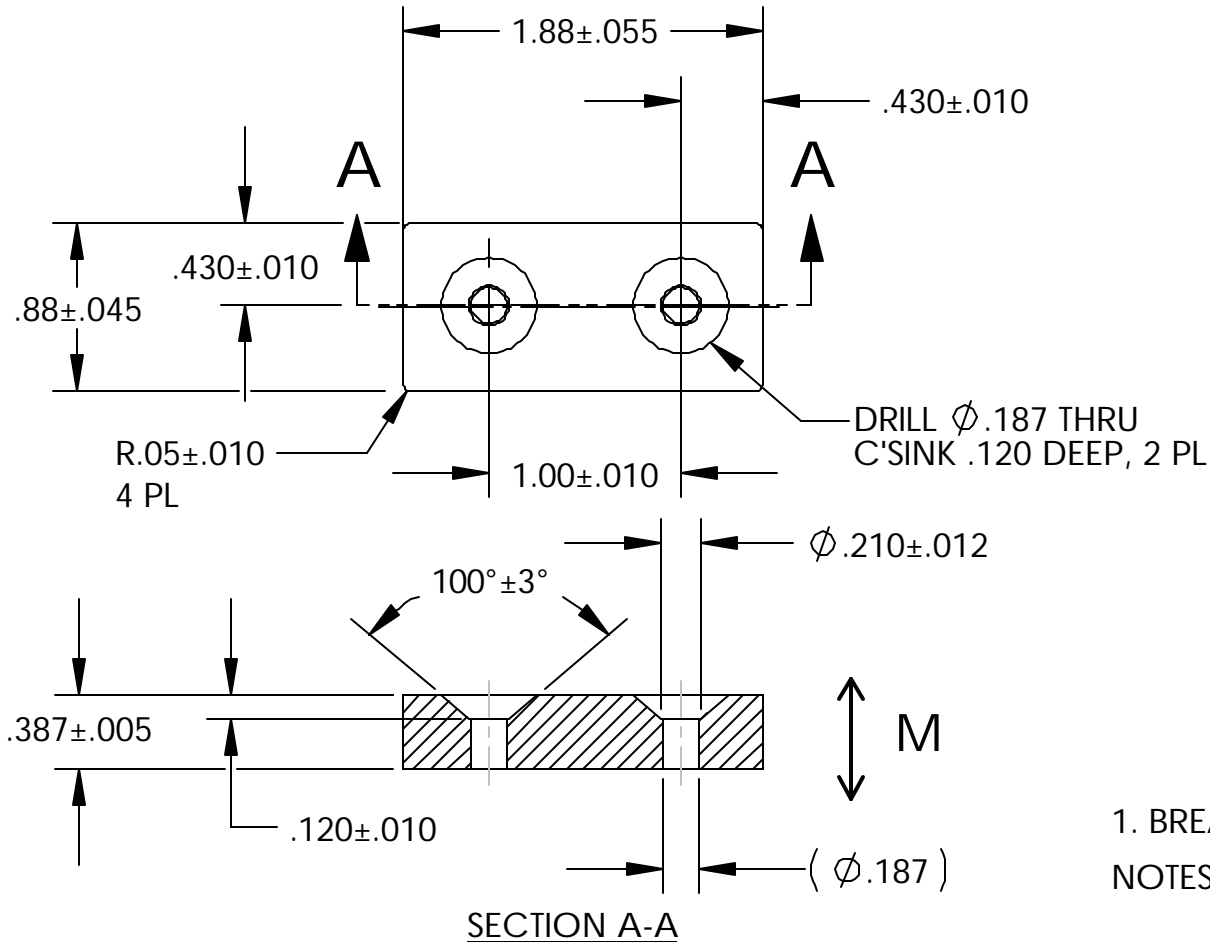


THIS DOCUMENT CONTAINS DESIGN AND OTHER INFORMATION WHICH ARE PROPRIETARY TO INTEGRATED MAGNETICS, INC. THEY MAY NOT, IN WHOLE OR IN PART, BE DISCLOSED OR USED FOR MANUFACTURE OF THE PART DISCLOSED HEREIN WITHOUT THE PERMISSION OF INTEGRATED MAGNETICS, INC.

LTR	DESCRIPTION	DATE	APPROVED
N/C	INITIAL RELEASE	3/27/01	B LAM
A	ECO 00030	8/21/02	B LAM



1. BREAK EDGES .005 - .015  
NOTES:

UNLESS OTHERWISE SPECIFIED  
1. DO NOT SCALE  
2. DIMENSIONS ARE IN INCHES  
3. 3rd ANGLE PROJECTION  
4. BREAK SHARP EDGES .005/.010  
5. SURFACE ROUGHNESS 125

6. MACHINED TOLERANCES:  
.X±.06, .XX±.02, .XXX±.005  
ANGLES  $\pm 0^{\circ}30'$   
7. MACHINED DIAMETERS ON A  
COMMON CENTER CONCENTRIC  
TO EACH OTHER WITHIN .005 TIR

8. NORMALITY, SQUARENESS, AND  
PARALLELISM .002 PER INCH  
TO A MAXIMUM OF .010 FOR  
A SINGLE SURFACE.



MATERIAL: <b>CERAMIC 5</b>	CUSTOMER: <b>MAGNET SALES</b>	DRAWN BY <b>CARL N.</b>	DATE <b>11/9/98</b>	TITLE <b>MAGNET</b>	
FINISH: <b>--</b>	SIMILAR TO: <b>--</b>	CHECKED BY <b>B.LAM</b>	DATE <b>3/27/01</b>	DWG NO. <b>21990</b>	REV <b>A</b>
					SIZE <b>A</b>